

NEITHER  
WATER  
NOR  
LAND

STUDIO JUMI  
JUNE 25 – AUG 22, 2026

MAJ  
VAN DER  
LINDEN

WOHNEN AM TICHELES

# Neither Water Nor Land

MAJ VAN DER LINDEN and Wohnen AM TACHELES are pleased to present *Neither Water Nor Land*, a solo exhibition by Berlin-based artist duo Studio Jumi. Working at the intersection of art, craft, and design, Julia Buntzel and Miriam Rose Gronwald transform traditional handweaving techniques by drawing unconventional, often discarded materials into textile works that are at once tactile, contemplative, and ecologically minded.

The exhibition takes its name from the ambiguous character of peatlands — ancient, layered environments caught between water and land, living and dead, preservation and decay. Once dismissed as mystical wastelands, these landscapes are now understood as the planet's largest natural carbon store, and among its most fragile. Studio Jumi translates this tension into woven form: surfaces become sites where the organic and the synthetic, the traditional and the contemporary are held together in deliberate contradiction.

The handwoven paintings, set in raw steel frames, provide a format for examining the conflicting forces within our environment, where natural materials intersect with non-degradable, human-made debris. Discarded bicycle tubes are entwined into the strict architecture of warp and weft alongside natural fibres of cotton, wool, and silk, placing industrial waste within a dialogue of opposing material tensions. The beauty of the work paradoxically emerges from these scars of disruption, raising the question of how ancient craft knowledge might regain significance in a moment of urgent environmental change.

Where rubber meets fibre, textures tell the story. The works carry the traces of their materials: faded manufacturer names, patches, the irregular geometry of hand-cut tubing against the softness of plant-based thread. These contrasts are not incidental — they are the subject. In joining disparate, often opposing elements into a coherent whole, weaving becomes both method and metaphor.

Underlining the series of works that take on the form of archaic human activity is Studio Bergob's steel bench *Chaise 'Too' Lounge*, its raw, industrial material resonating with Studio Jumi's play of the artefact in a future archaeology. A bespoke scent composition, developed in collaboration with Dr Caroline McMillan, accompanies the exhibition, adding an atmospheric layer to Studio Jumi's exploration of memory, materiality, and transformation.

*Neither Water Nor Land* is representative of Studio Jumi's practice, one that moves fluidly between ecological reflection, material investigation, and formal experimentation — proposing that honest responses to environmental complexity might begin, simply, with the act of making.

MAJ VAN DER LINDEN  
Townhouse 068 im Stadtquartier AM TACHELES  
Johannisstraße 14, 10117 Berlin

On display  
June 25 – August 22, 2026

Opening Hours  
Saturdays 2 – 6pm, or by appointment

MAJ  
VAN DER  
LINDEN

WOHNEN AM TACHELES





Studio Jumi: Braid, 2026  
rubber  
250 x 14 cm  
Ed. 1/3

1.300,00 € (incl. 7% VAT)





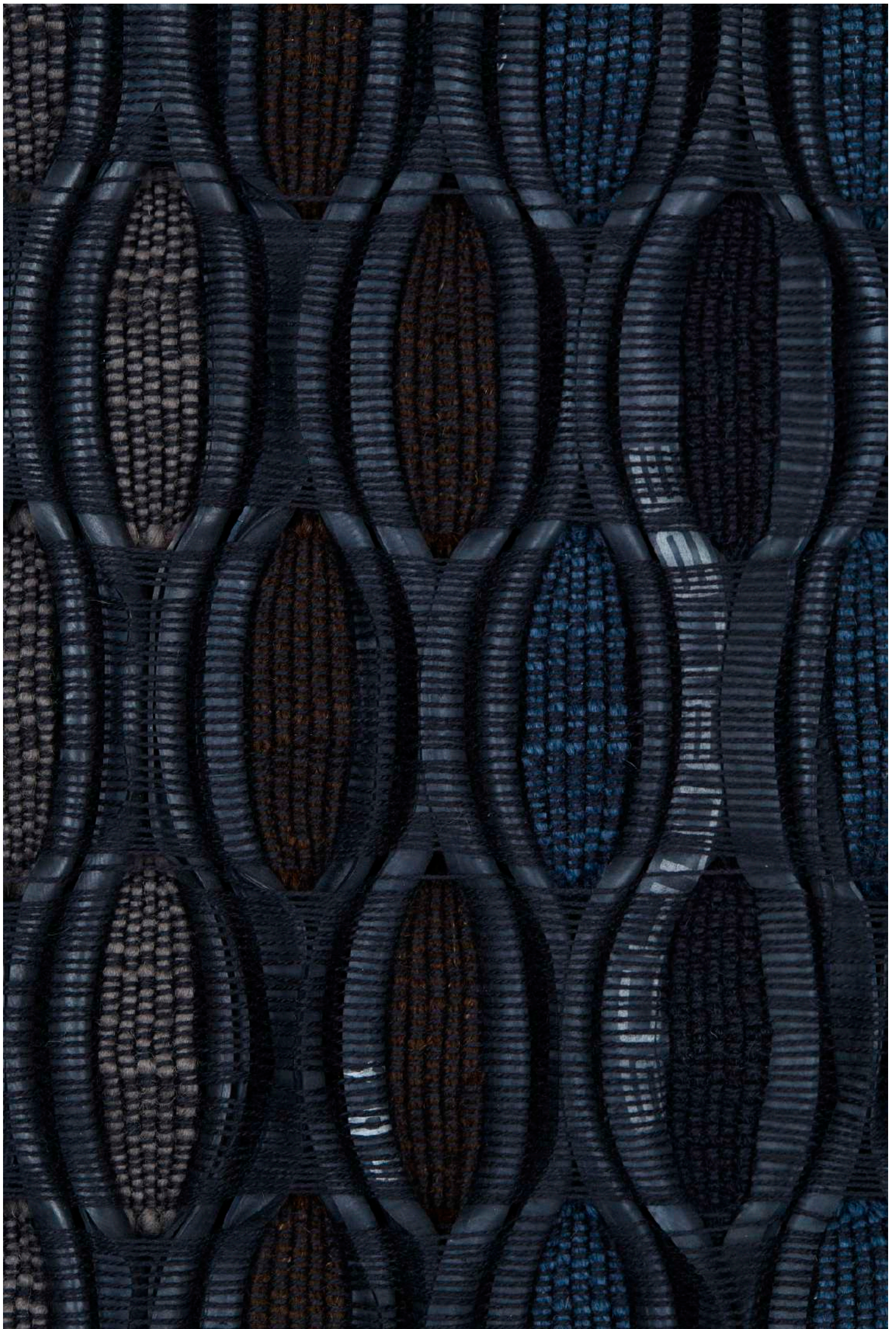
Bespoke scent composition, 2026  
by Dr Caroline McMillan

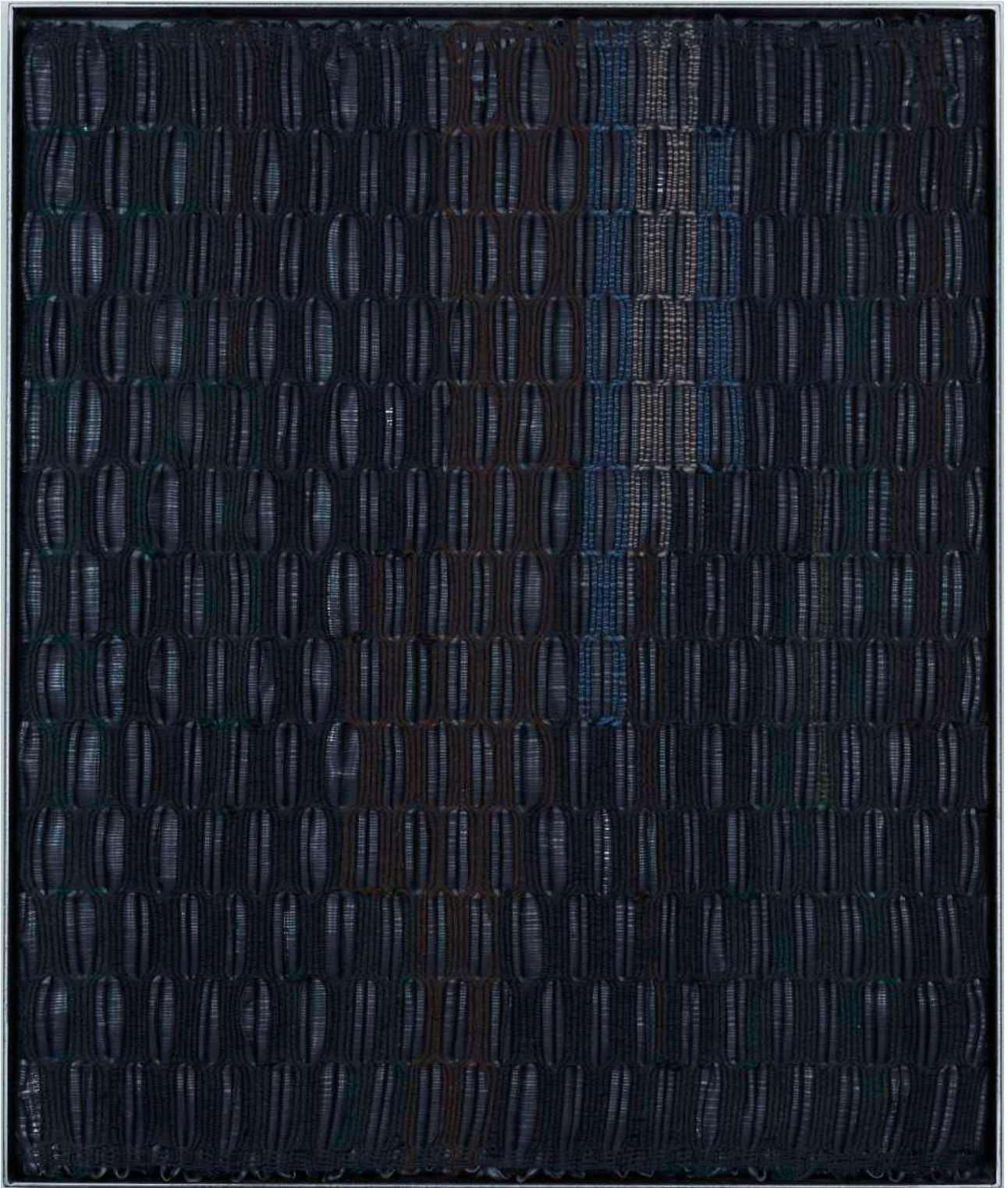
Scented objects from the threshold.  
Vessels hold the woody, atmospheric darkness of moors. Where  
peat holds memory, phenomena lures, and plants swallow the  
ruin. Step into worlds that exist beneath.



Studio Jumi: Moor IV, 2026  
wool, rubber, cotton, silk, steel frame  
handwoven  
67 x 80 cm

4.000,00 € (incl. 7% VAT)

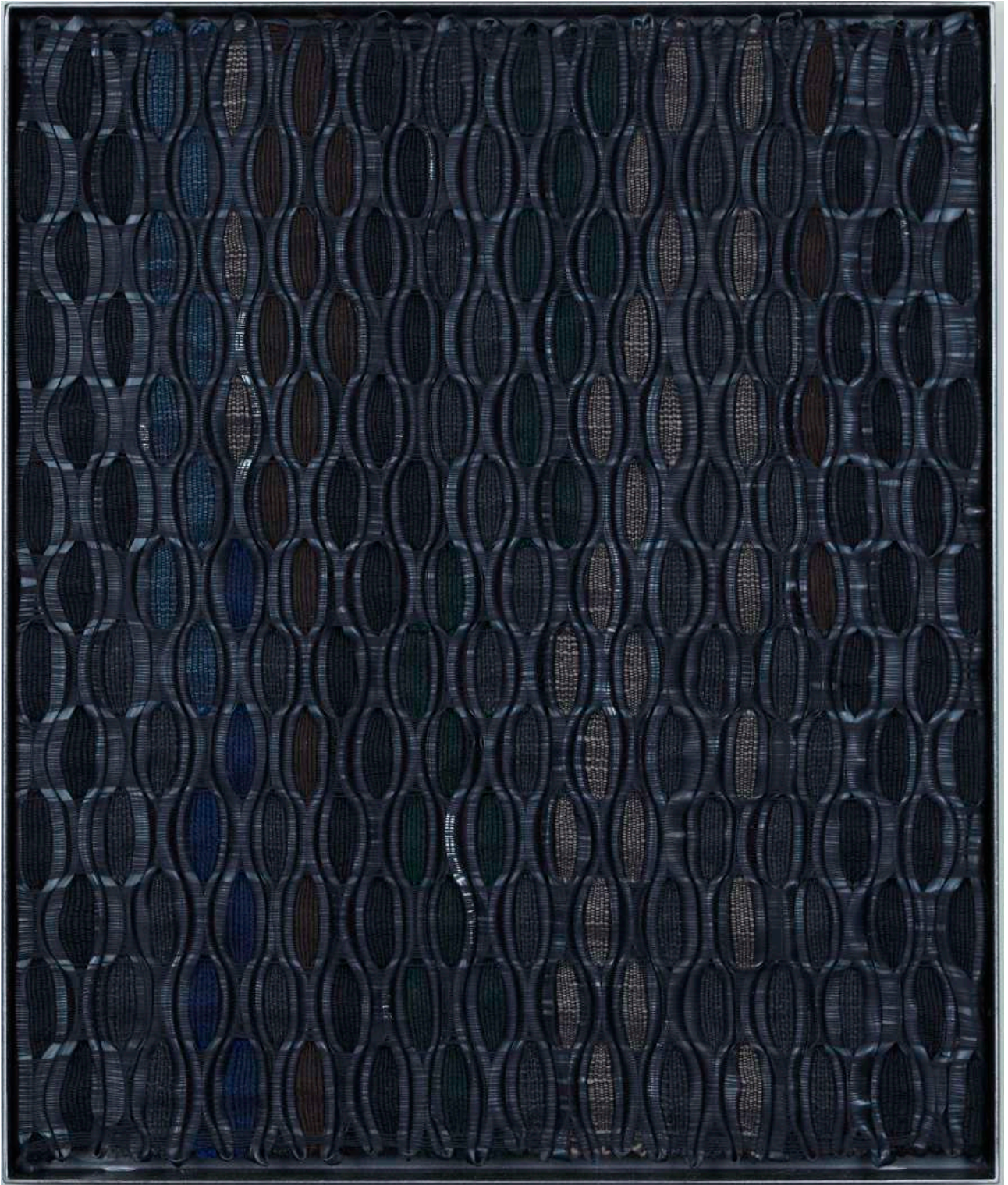




Studio Jumi: Moor V, 2026  
wool, rubber, cotton, silk, steel frame  
handwoven  
67 x 80 cm

4.000,00 € (incl. 7% VAT)





Studio Jumi: Moor VI, 2026  
wool, rubber, cotton, silk, steel frame  
handwoven  
67 x 80 cm

4.000,00 € (incl. 7% VAT)



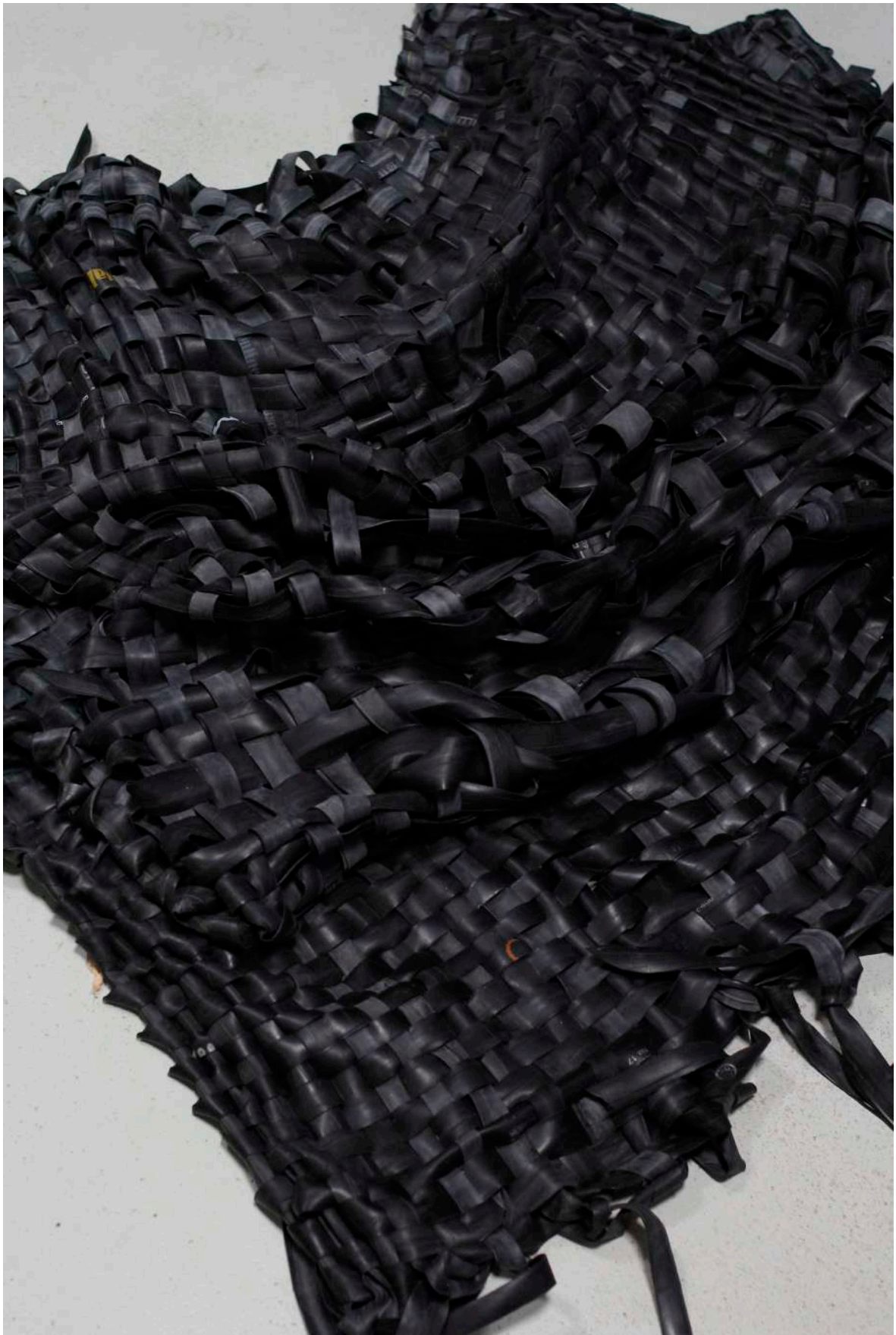
## Moor I – VII

Moor I – VII are handwoven, steel-framed textile works made from discarded bicycle tubes and wool. Part of their ongoing Woven Strata series, the works draw on the layered textures of peatlands, where slow decomposition of plants creates a living archive of ecological and archaeological history.

By translating these fragile landscapes into textile form, Studio Jumi reflects on the complex relationship between nature, human activity, and material transformation. The handwoven patterns, with seed- and bark-like motifs, evoke the accumulation of plant matter over time, turning decay into a quiet, enduring beauty.

The series bridges traditional weaving techniques with contemporary approaches, transforming unconventional materials into contemplative, tactile artworks.

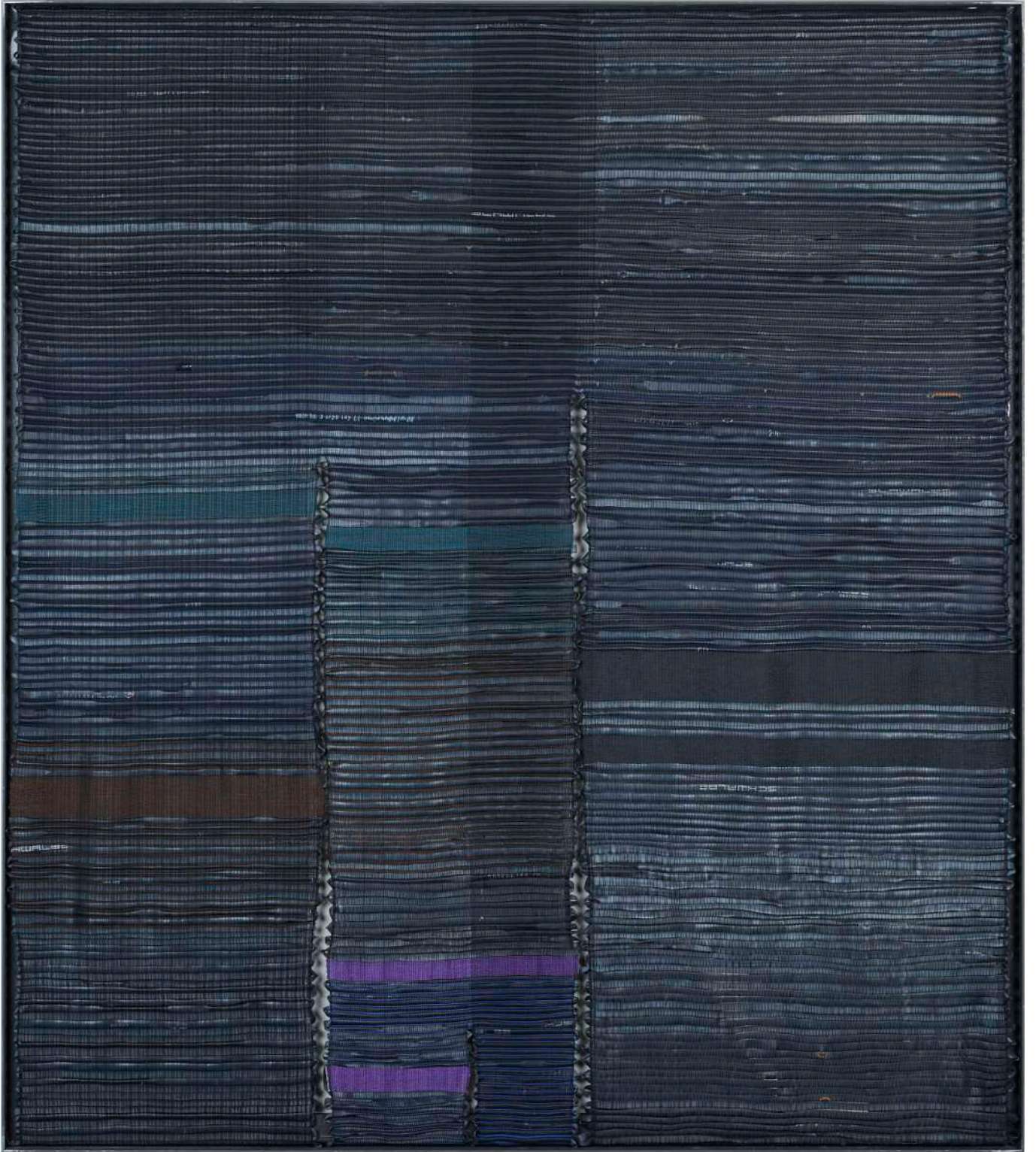




Studio Jumi: Umbral, 2026  
rubber  
handwoven  
two piece, approx. 115 x 260 cm each  
installation size may vary

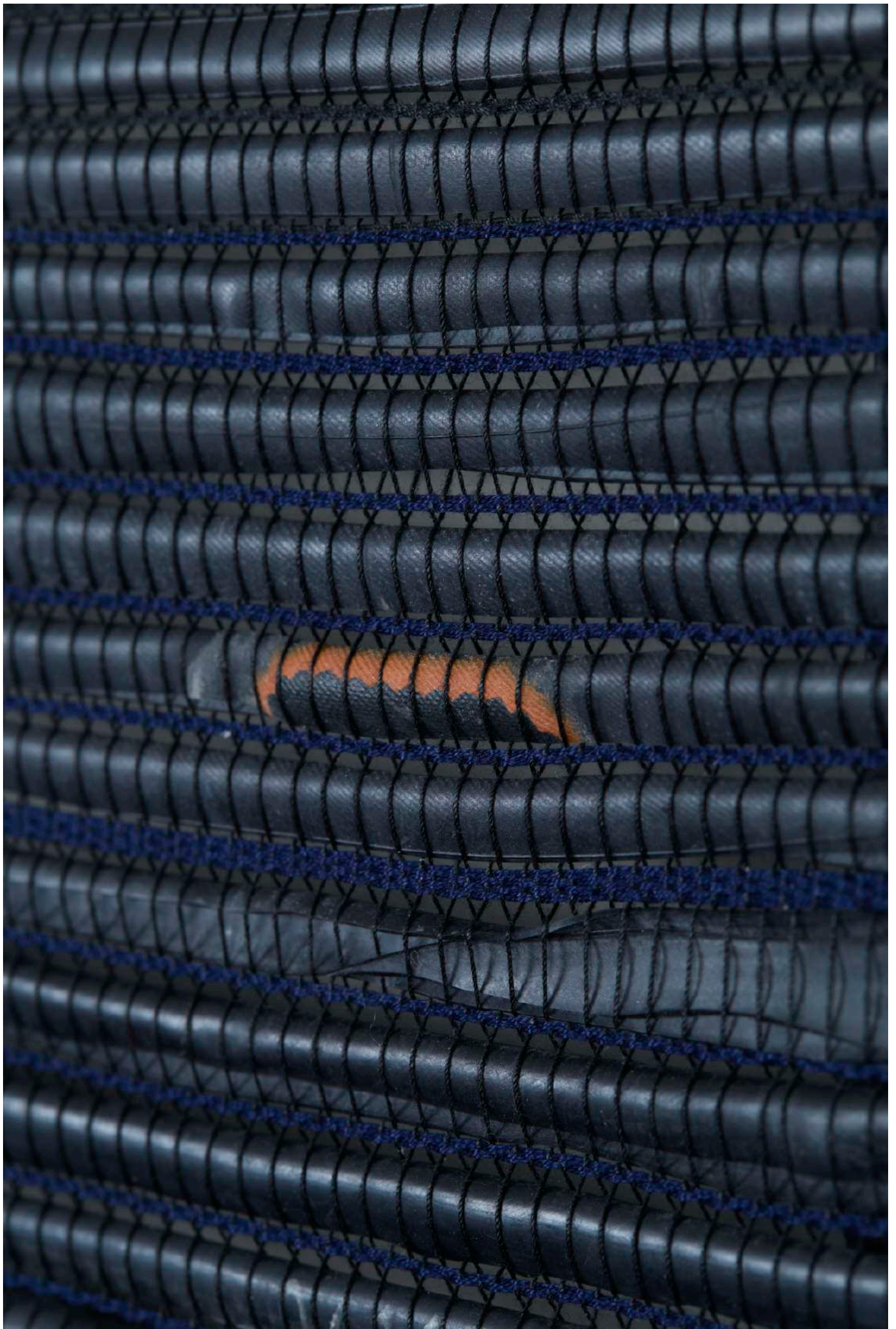
5.000,00 € (incl. 7% VAT)

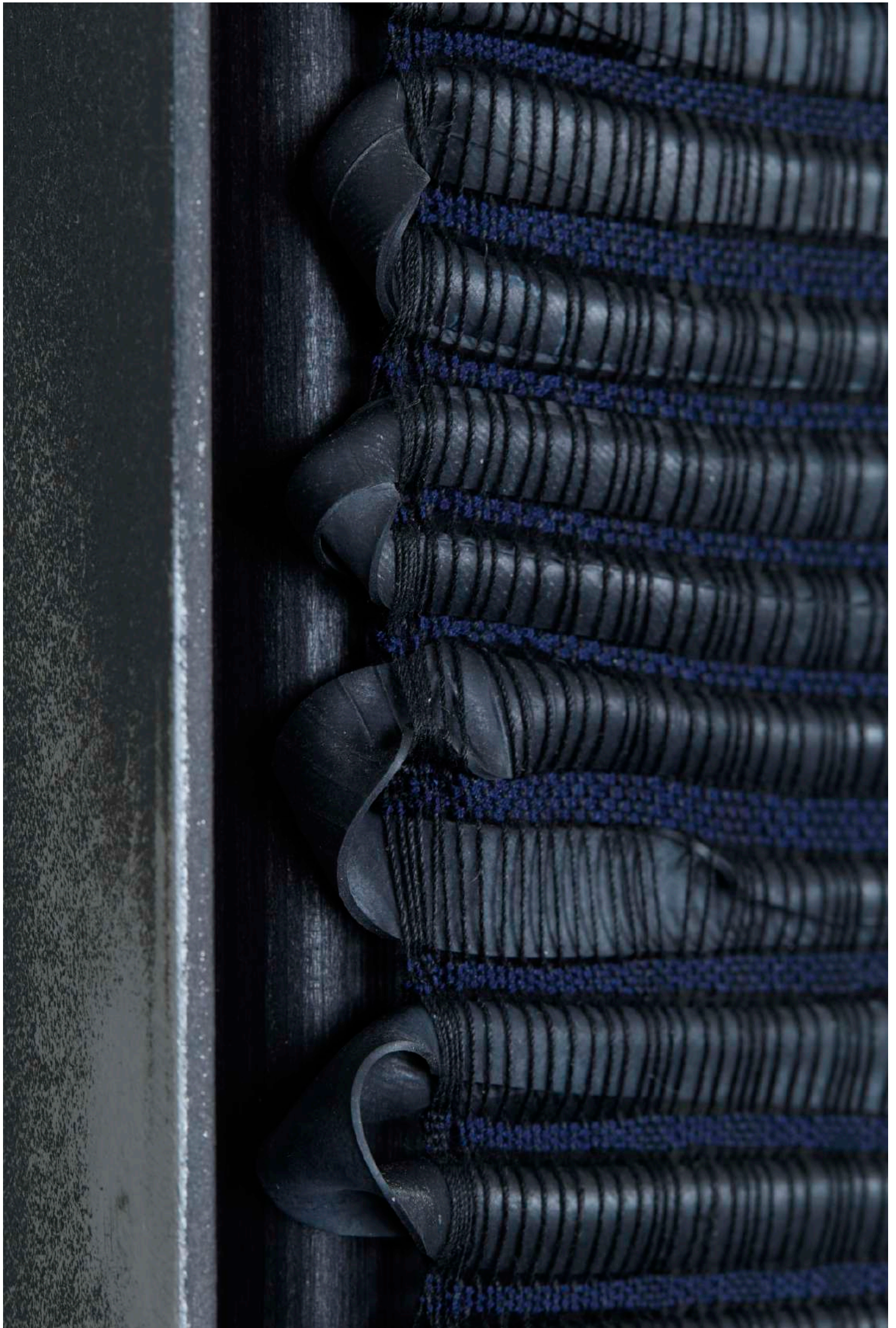


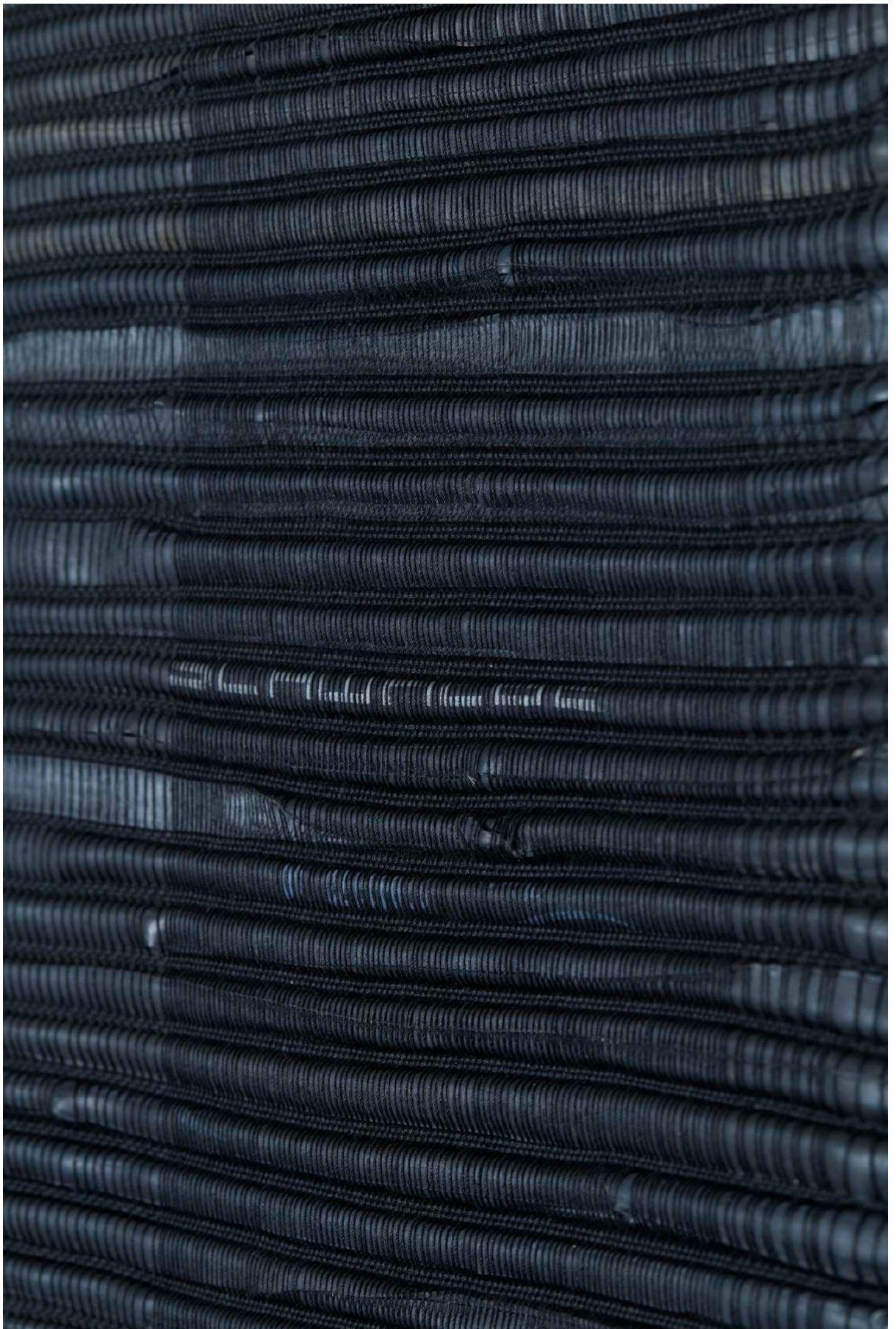


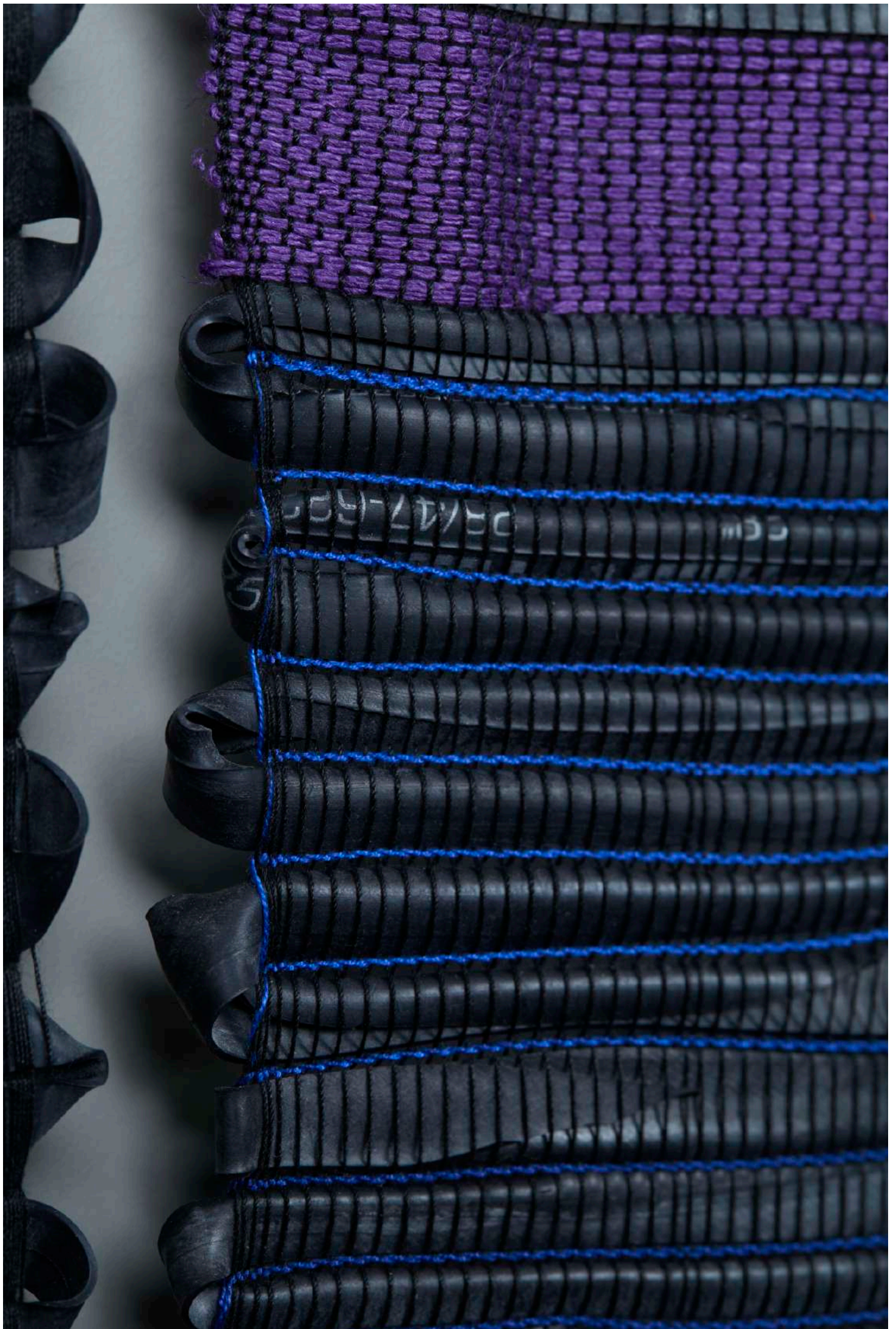
Studio Jumi: Passage, 2026  
rubber, synthetic fibre, cotton, linen, steel frame  
handwoven  
177 x 158 cm

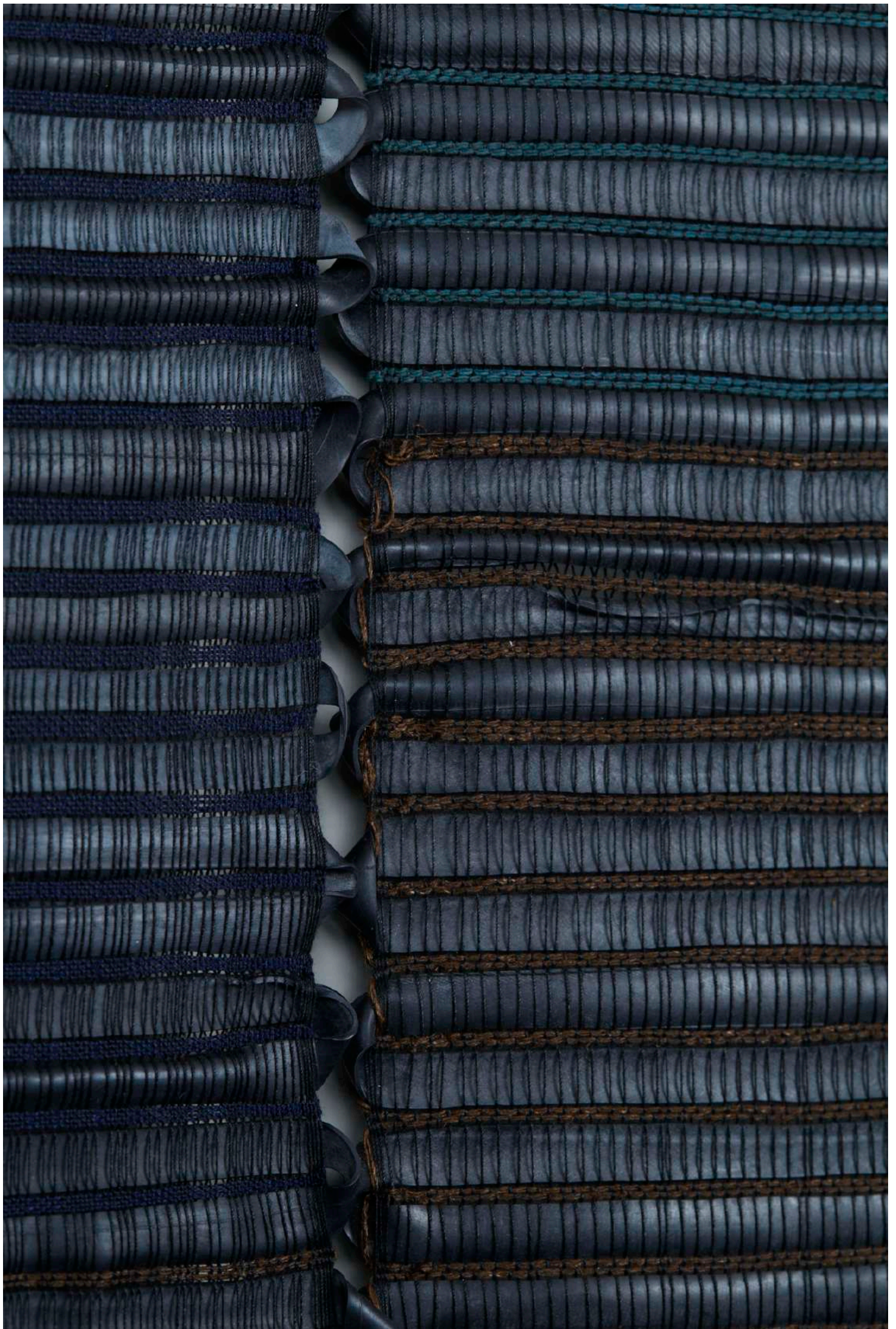
10.000,00 € (incl. 7% VAT)



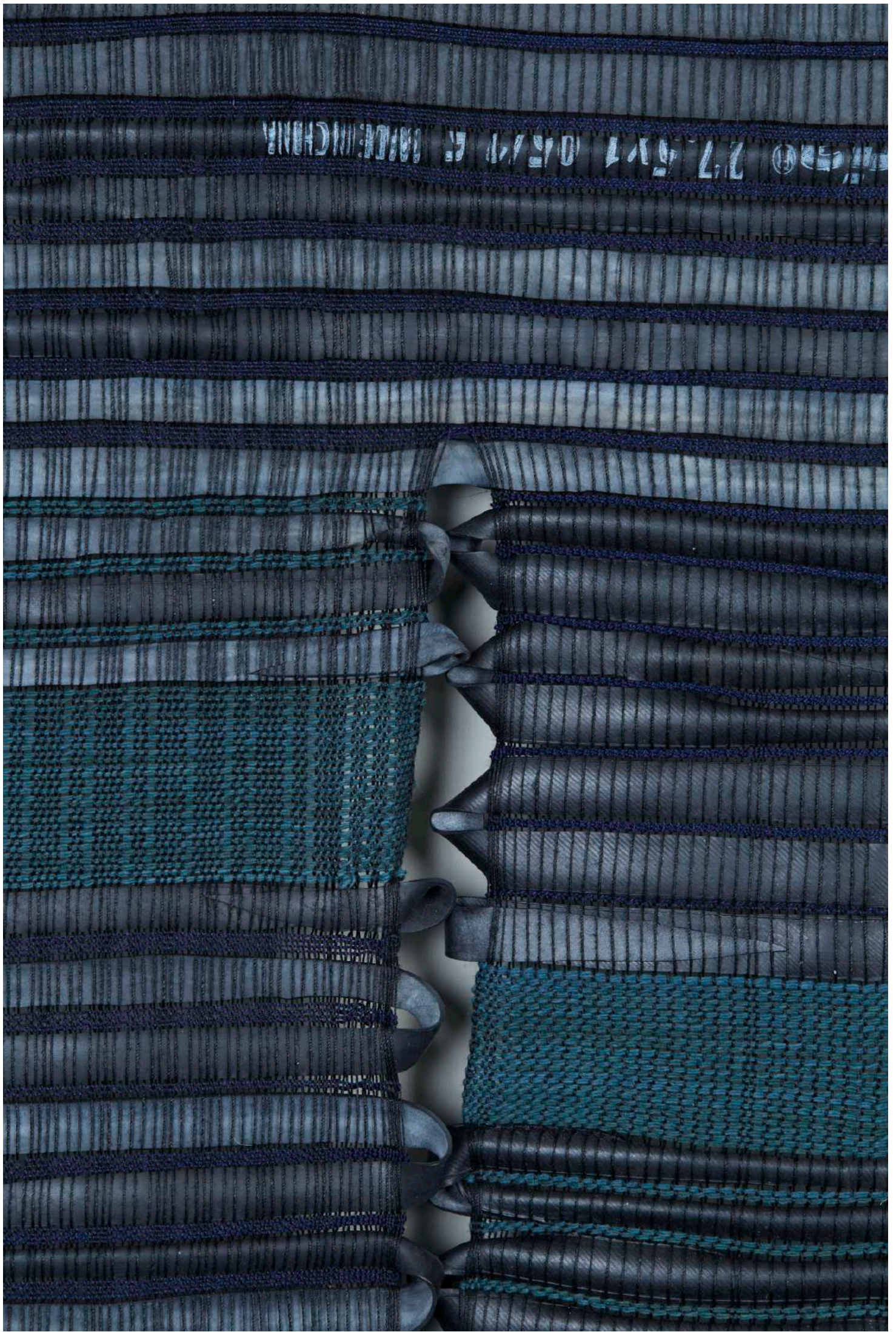








MADE IN CHINA 27.5x1.0 0.5/1.0

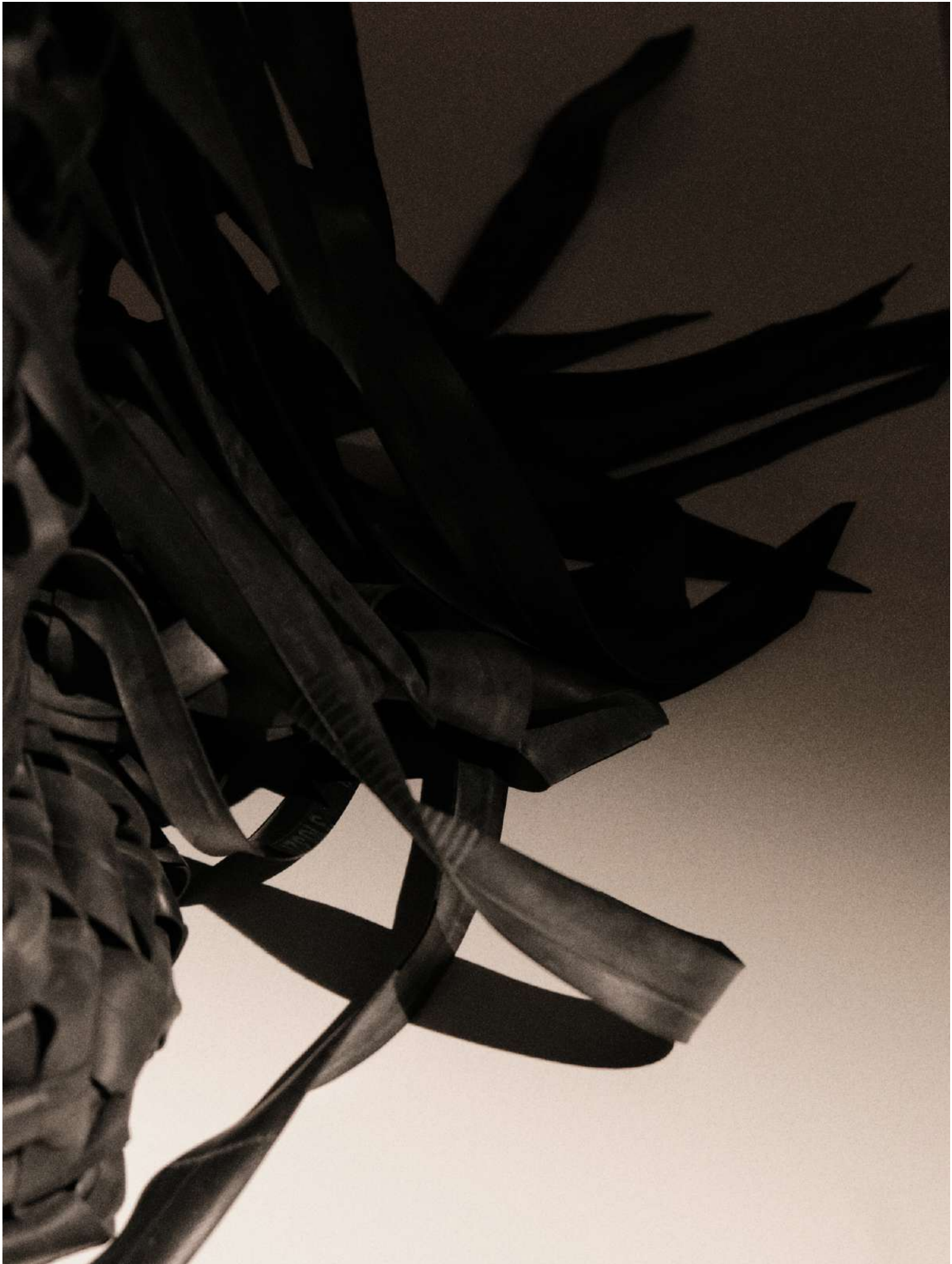






Studio Jumi: Cover, 2026  
rubber  
handwoven  
H 42 x Ø 27 cm

2.000,00 € (incl. 7% VAT)

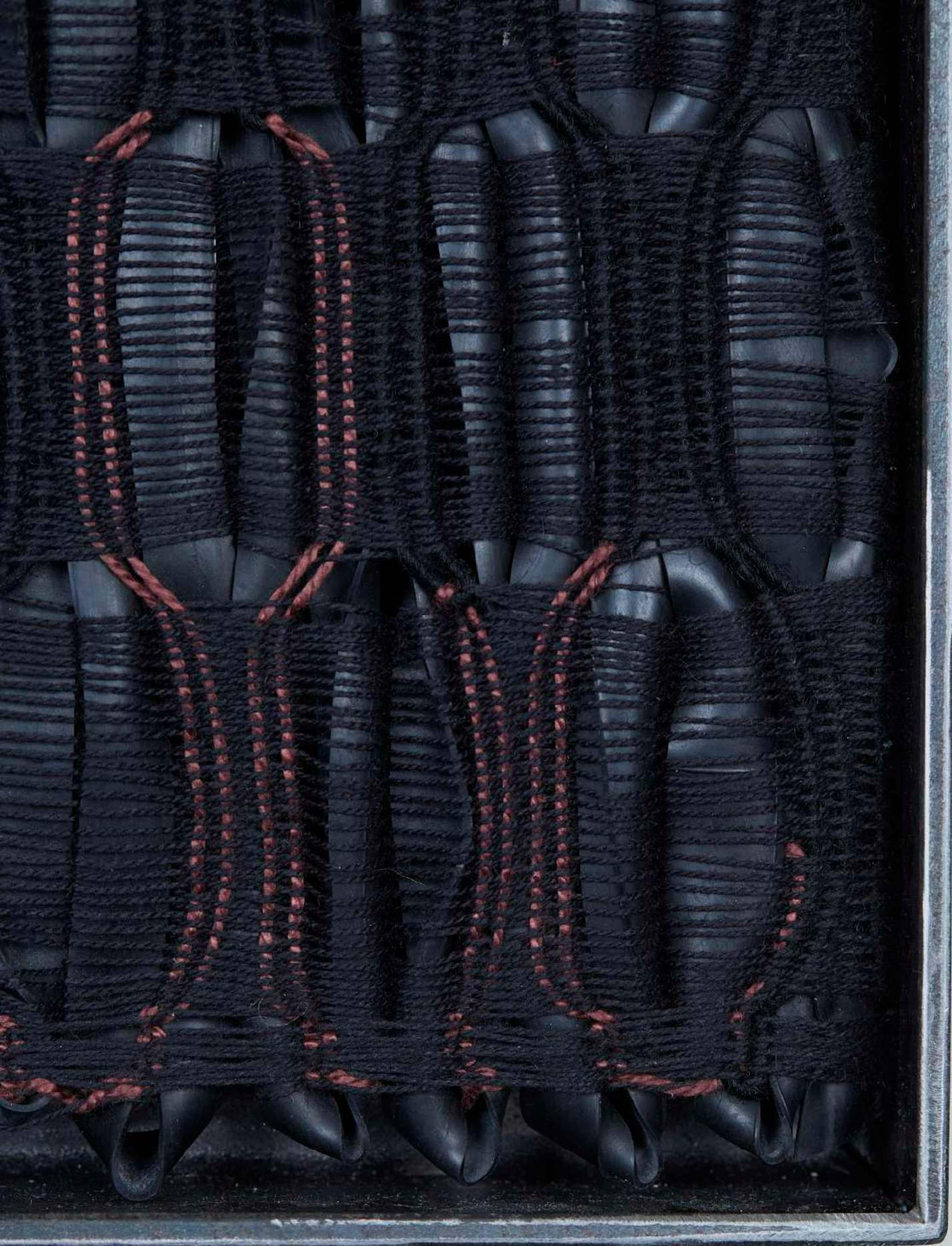


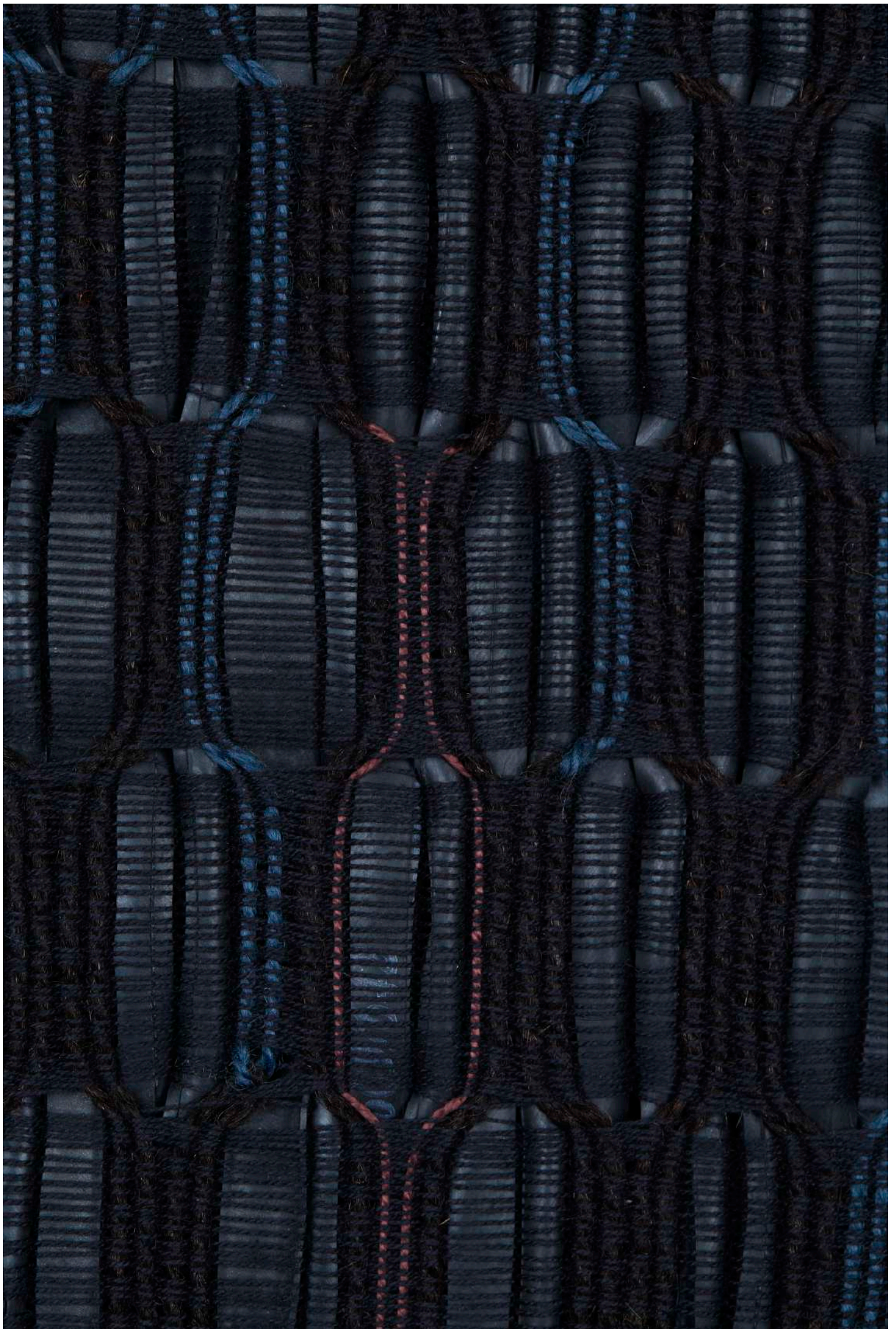


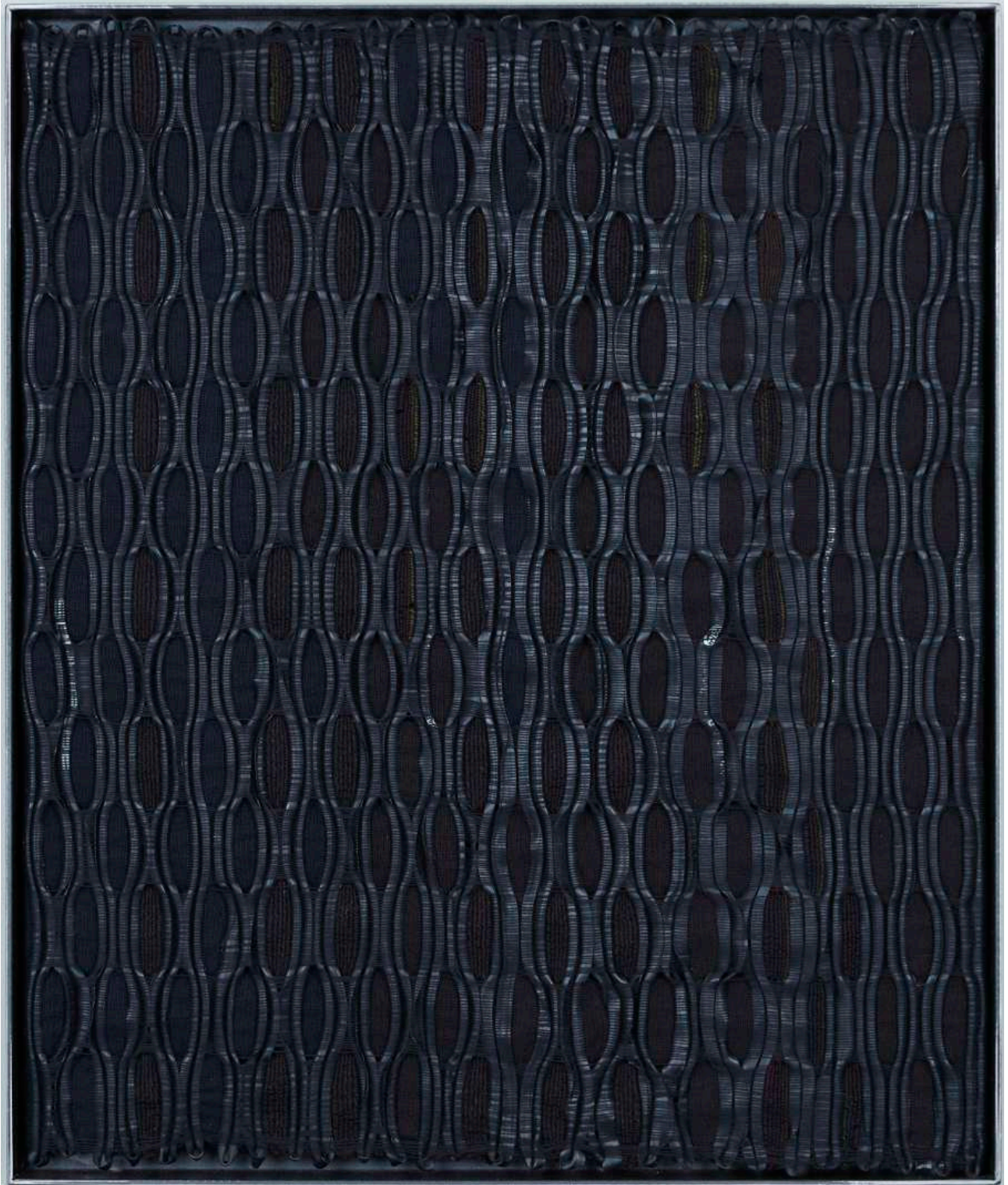


Studio Jumi: Moor I, 2026  
wool, rubber, cotton, silk, steel frame  
handwoven  
67 x 80 cm

4.000,00 € (incl. 7% VAT)





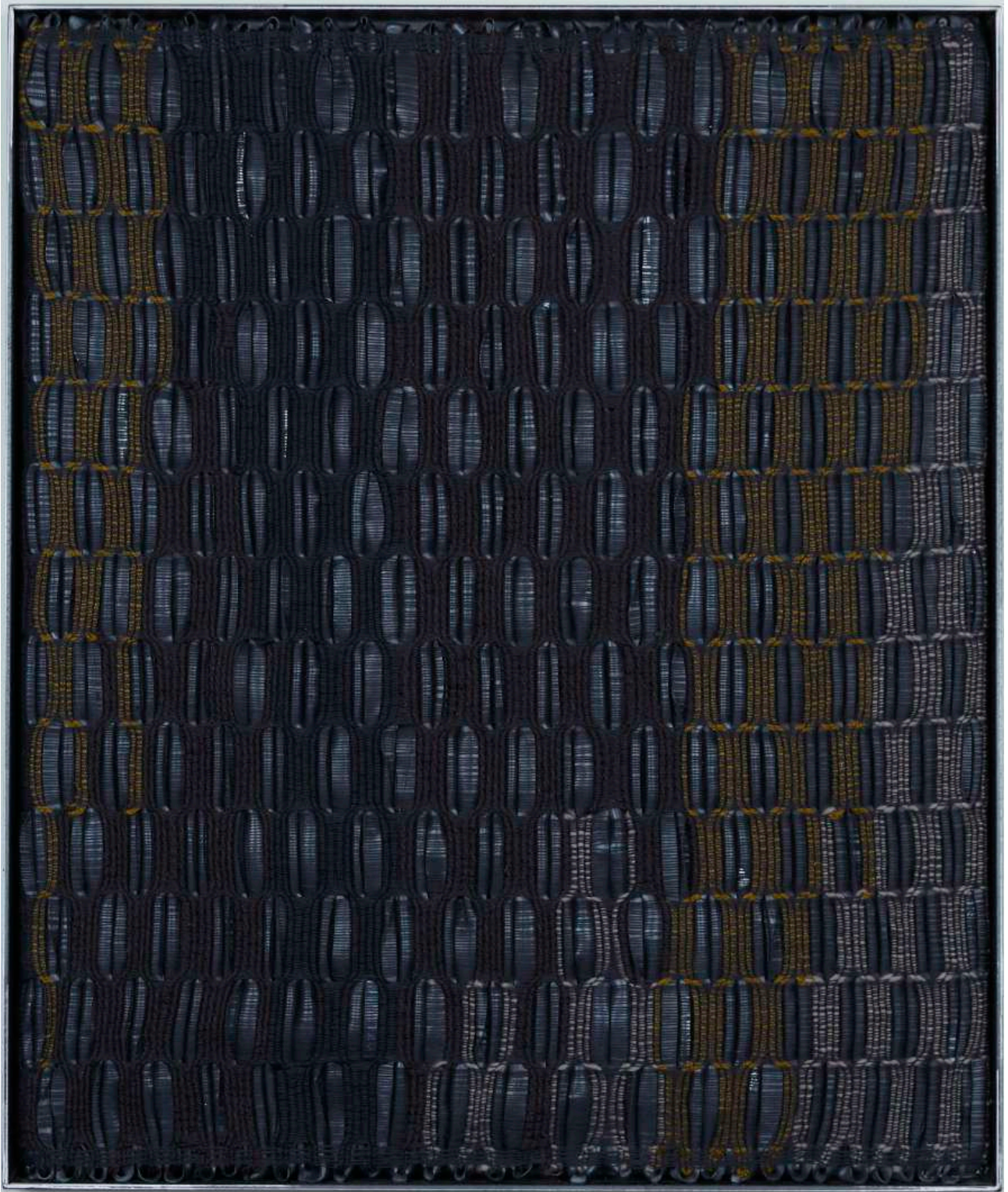


Studio Jumi: Moor II, 2026  
wool, rubber, cotton, silk, steel frame  
handwoven  
67 x 80 cm

4.000,00 € (incl. 7% VAT)



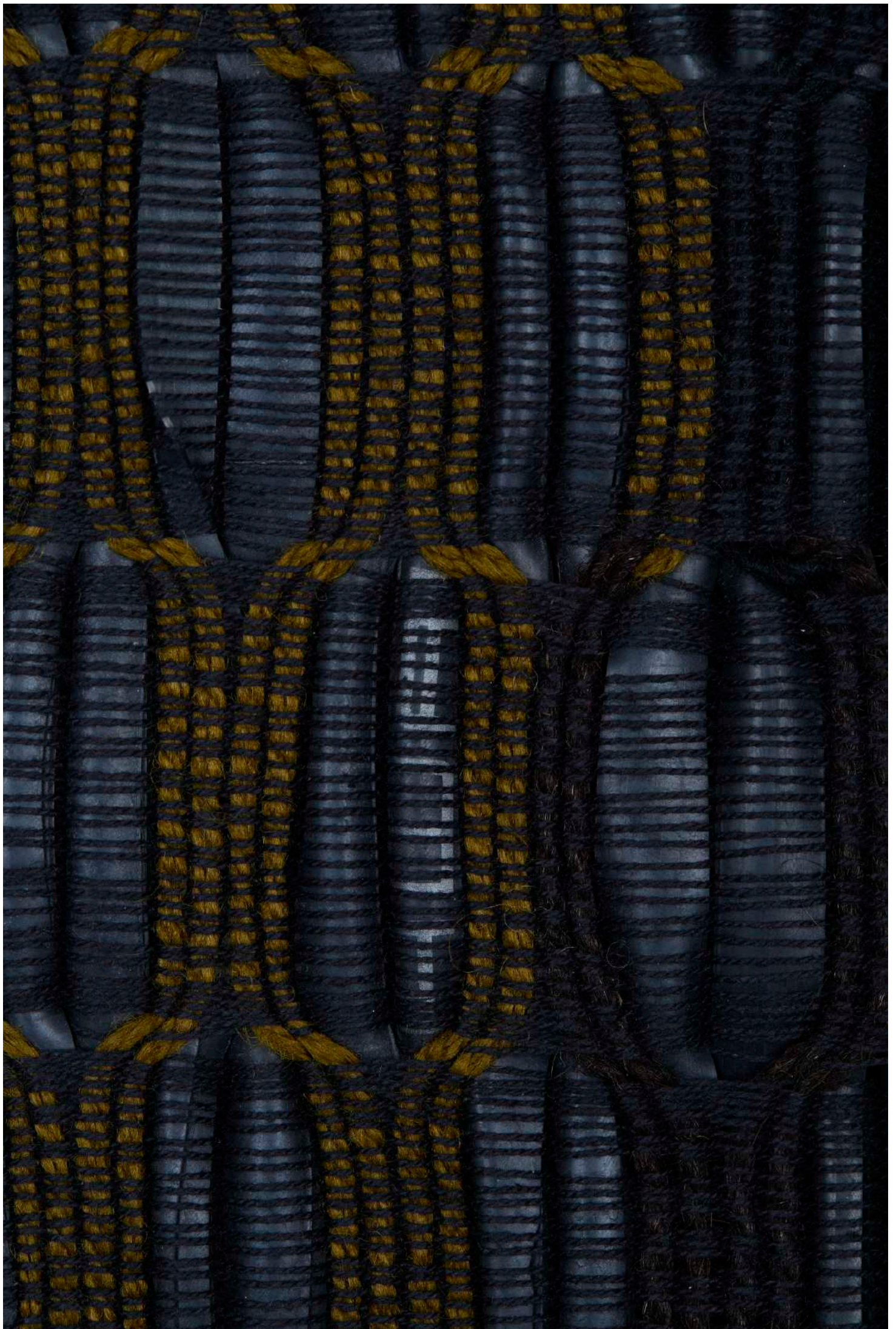




Studio Jumi: Moor III, 2026  
wool, rubber, cotton, silk, steel frame  
handwoven  
67 x 80 cm

4.000,00 € (incl. 7% VAT)

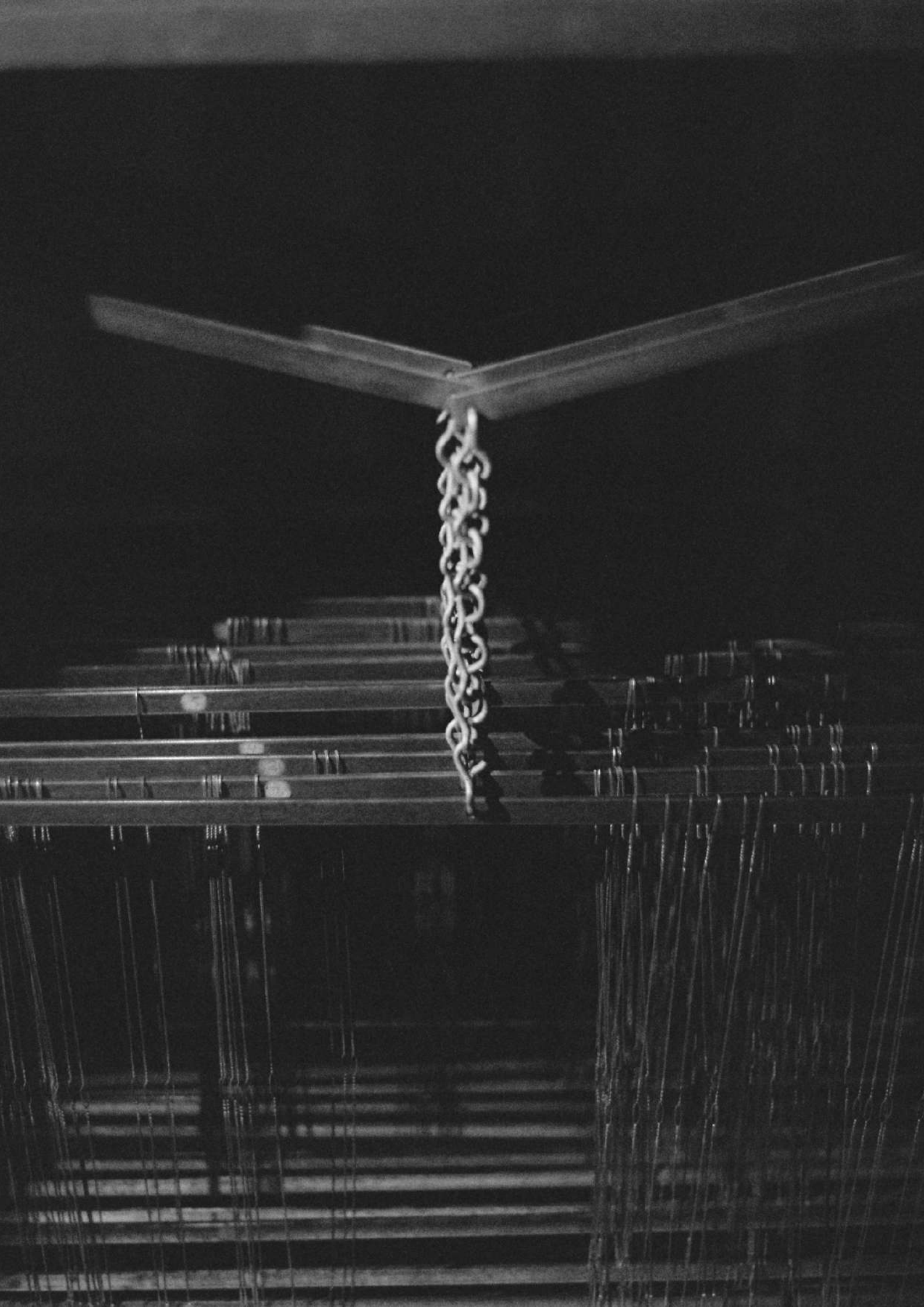


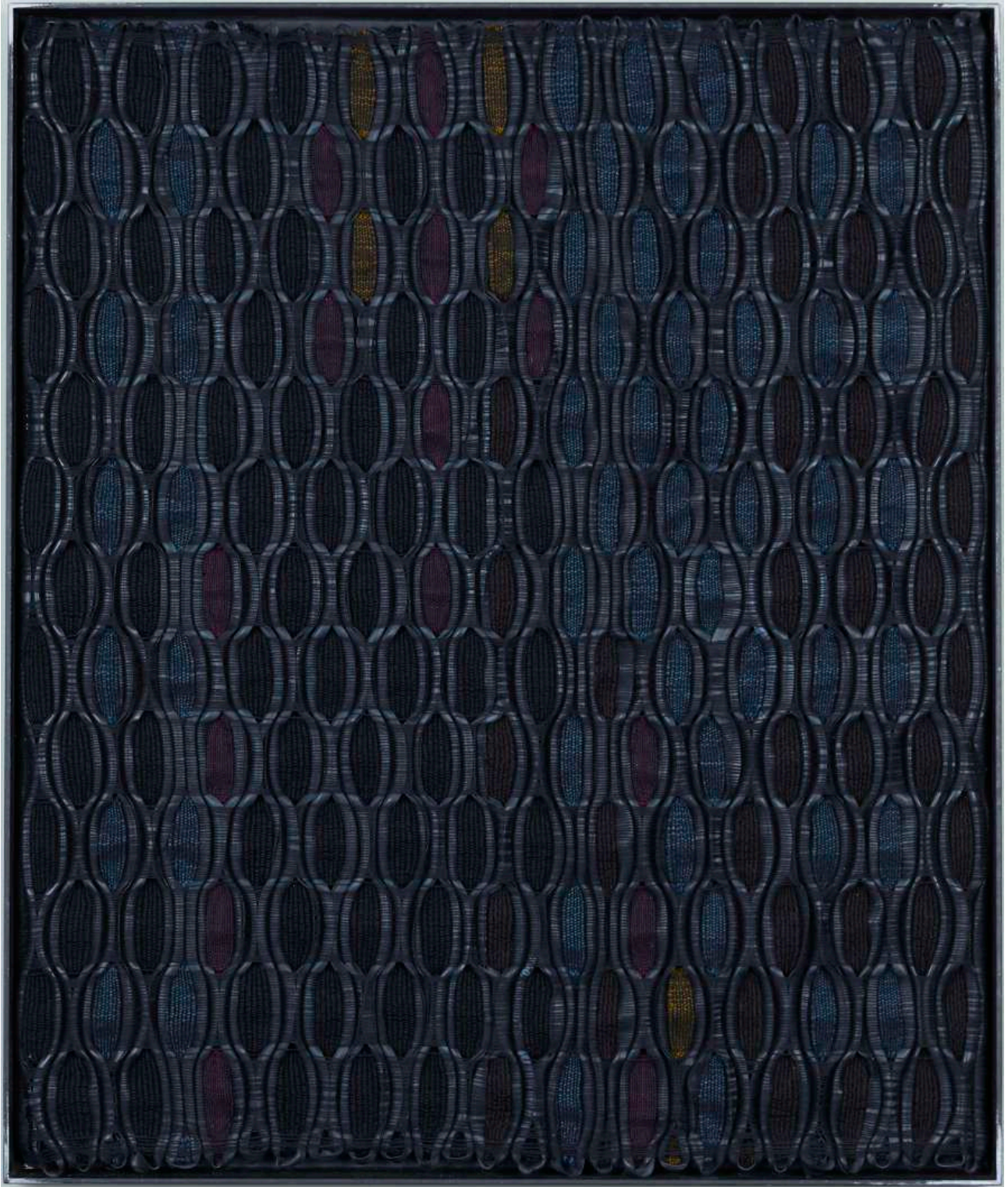






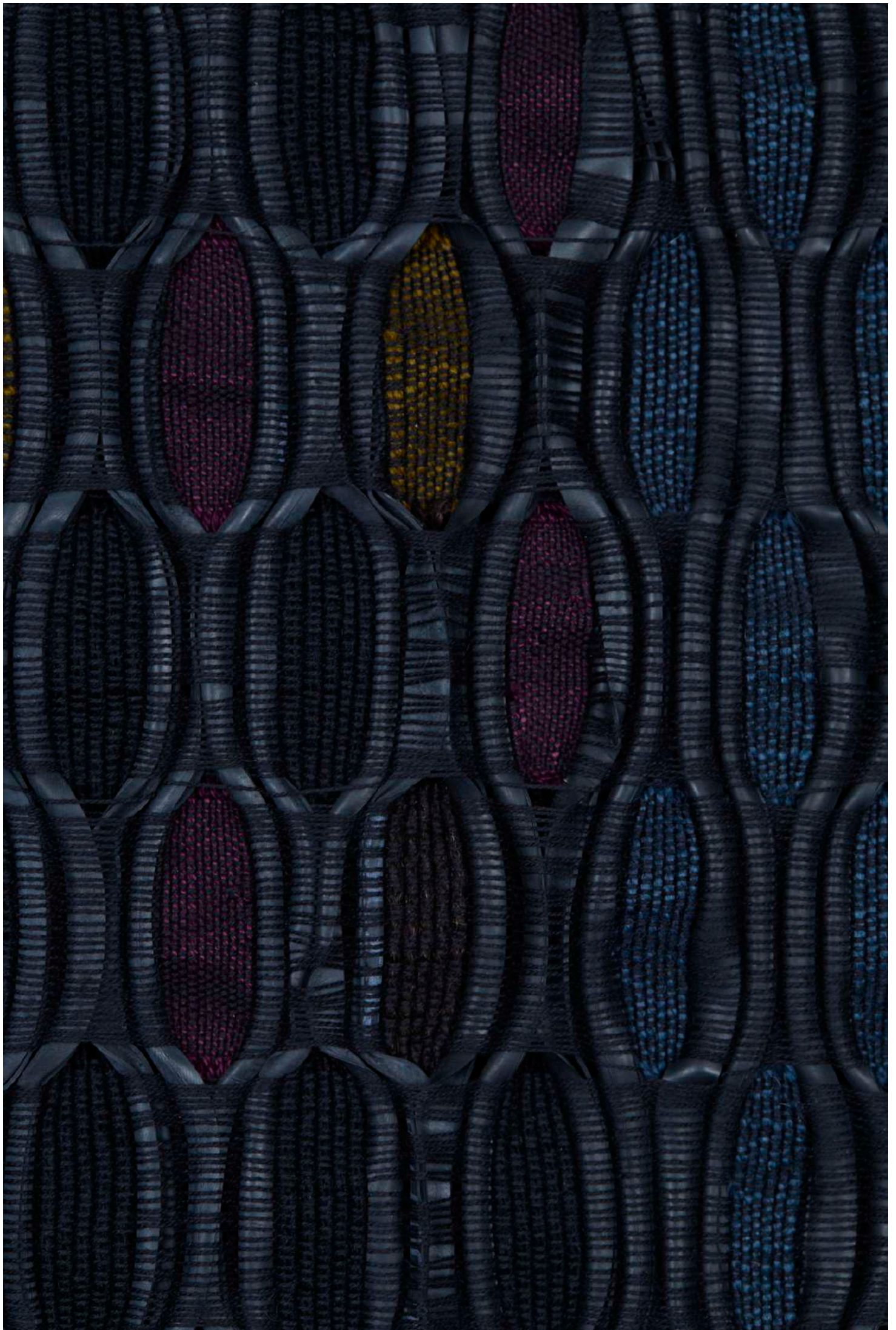
Original loom from the Studio Jumi workshop  
with sound installation by Studio Jumi  
not for sale





Studio Jumi: Moor VII, 2026  
wool, rubber, cotton, silk, steel frame  
handwoven  
67 x 80 cm

4.000,00 € (incl. 7% VAT)













Studio Jumi: Net, 2026  
rubber  
handwoven  
40 x 50 cm

700,00 € (incl. 7% VAT)

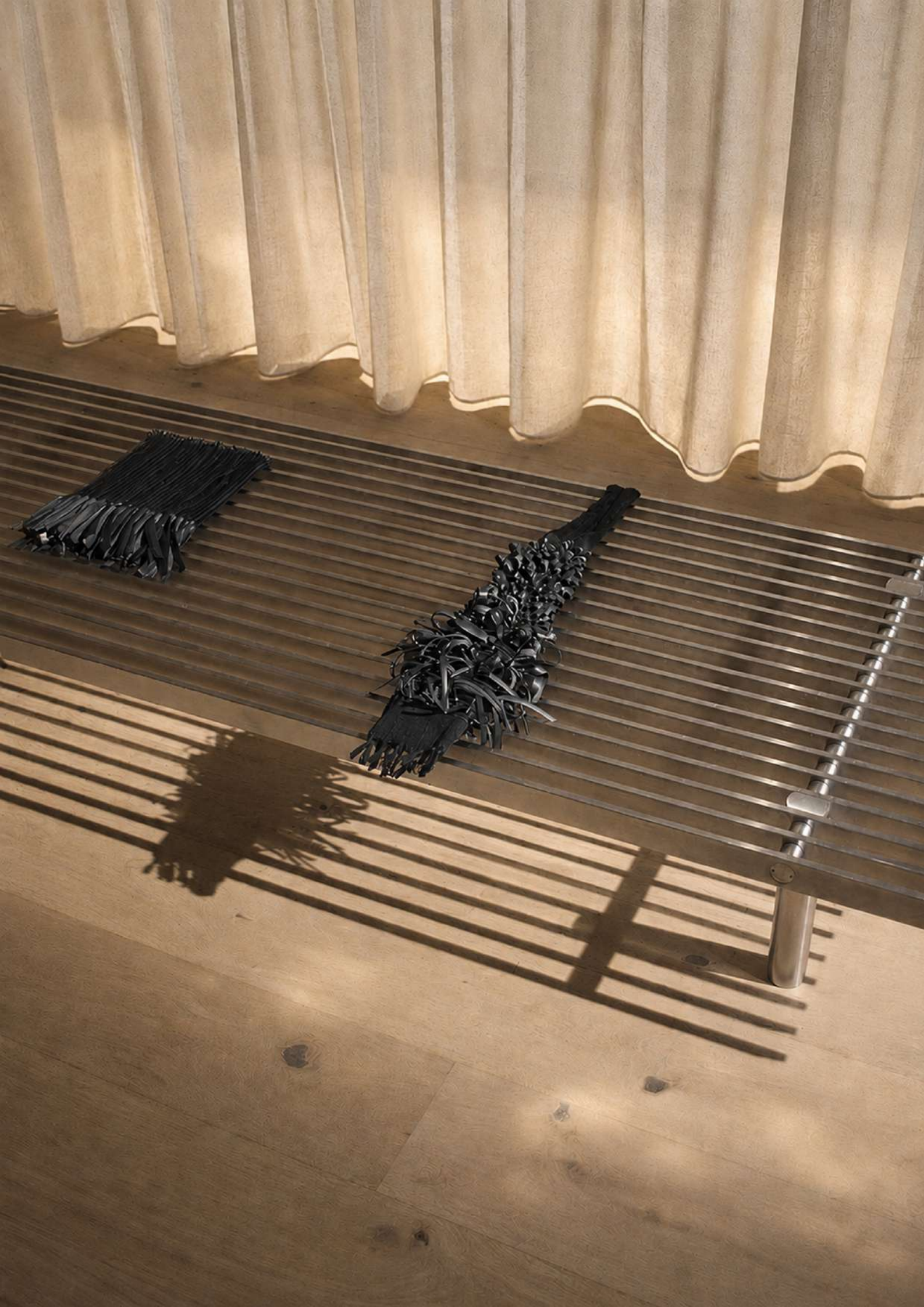




Studio Jumi: Relic, 2026  
rubber, cotton  
handwoven  
33 x 22 x 3 cm

700,00 €







Studio Jumi: Fish, 2026  
rubber, cotton  
handwoven  
92 x 12–18 x 7 cm

1000,00 € (incl. 7% VAT)

## **Braid, Cover, Net, Relic, Fish**

Like remnants of a past civilization, this series of works plays with the idea of a future archaeology. Woven from discarded bike tubes and cotton, the objects take the form of archaic human activity — food, tools and domestic objects. As the imprint of our living embeds itself into our ecosystems, the lines between the natural and synthetic dissolve, suggesting that the artefact, once a marker of human history, becomes a marker of human trace.



Studio Bergob: Chaise 'Too' Lounge  
daybed  
stainless steel profiles, custom screws  
62 x 240 cm

price on request



**Studio Jumi** is a Berlin-based duo working at the intersection of art, design, and craft. Artists Julia Buntzel and Miriam Rose Gronwald preserve handweaving traditions while redefining them through contemporary textile art. By incorporating unconventional materials into warp and weft, they create bold and innovative works. Inspired by the Bauhaus weaving workshops and Black Mountain College, Studio Jumi's approach reflects the legacy of textile pioneers like Anni Albers and Sheila Hicks. Their practice bridges tradition and innovation, celebrating craftsmanship in contemporary art.

# MAJ VAN DER LINDEN

MAJ VAN DER LINDEN

[mail@majvanderlinden.com](mailto:mail@majvanderlinden.com)

[www.majvanderlinden.com](http://www.majvanderlinden.com)

[@maj\\_van\\_der\\_linden](#)

Neither Water Nor Land | Studio Jumi  
June 25 – August 22, 2026

MAJ VAN DER LINDEN  
Townhouse 068 im Stadtquartier AM TACHELES  
Johannisstraße 14, 10117 Berlin

Open Saturdays, 2 – 6pm  
and by appointment

SOFT REFLECTIONS  
May 01 – August 22, 2026

MAJ VAN DER LINDEN  
Veteranenstraße 15, 10119 Berlin

Open Fridays & Saturdays, 2 – 6pm  
and by appointment

Other available works by Studio Jumi



Studio Jumi: Transcendence, 2025  
linen, silver, steel  
handwoven  
195 x 120 cm

12.000,00 € (incl. 7% VAT)



## Transcendence

The work Transcendence captures both the technical mastery of the craft and the aspiration to change the common notion of a hand-woven textile. Composed of over a thousand metal threads and fine natural white linen, its appearance conveys a sense of spirituality, contrasting with the weight of material it is composed of. Like a distant memory, the outline of a structured pattern holds together the stream of fibers that move in and out of the fabric, proving its definition of a woven textile.



Studio Jumi: Blue Horse, 2025  
cotton, rubber  
handwoven  
118 x 20 cm

1.190,00 € (incl. 7% VAT)

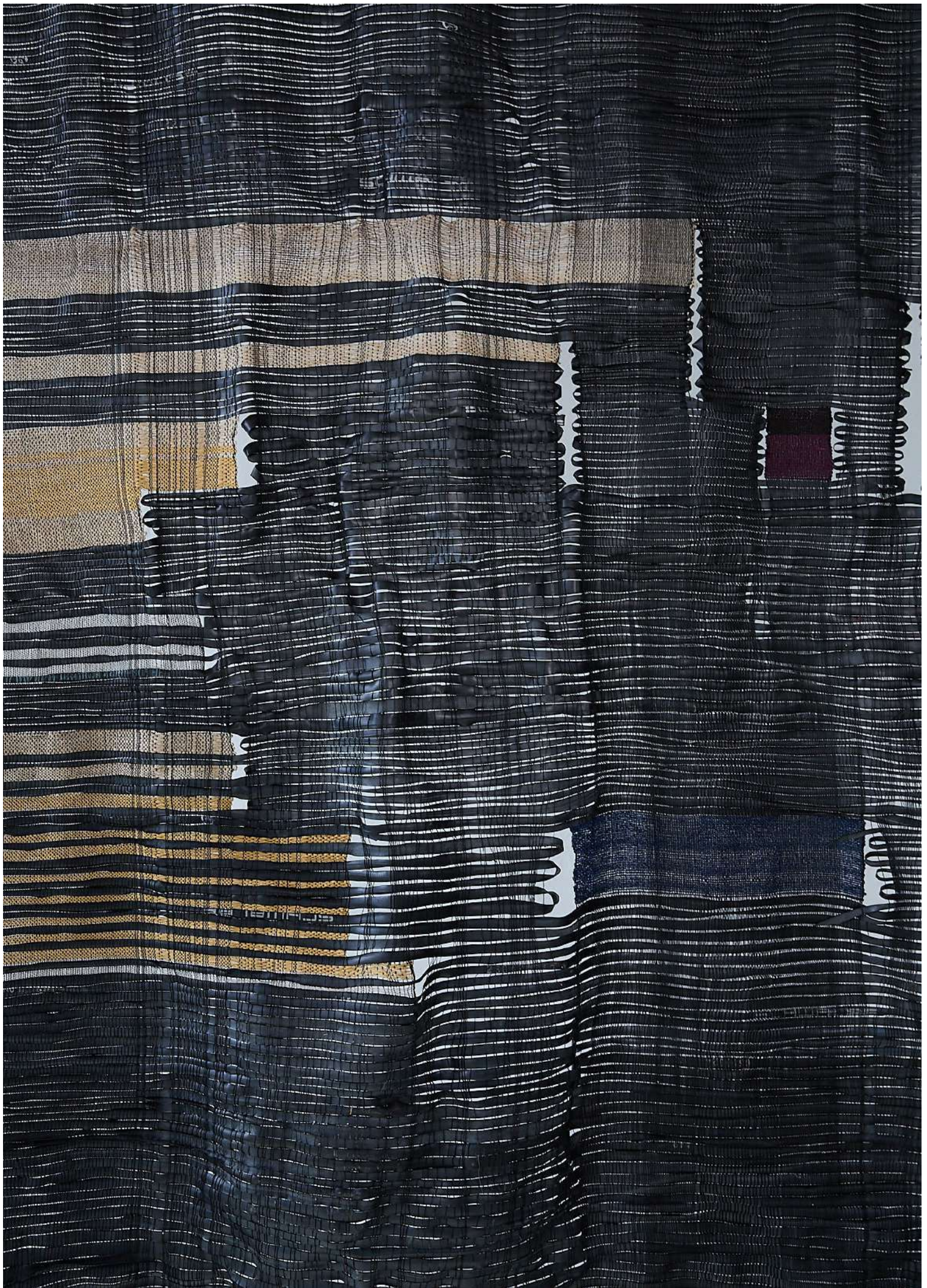






Studio Jumi: Landscape I, 2024  
synthetic fiber, rubber, cotton, wool, silk, hemp  
handwoven  
180 x 150 cm

5.200,00 € (incl. 7% VAT)



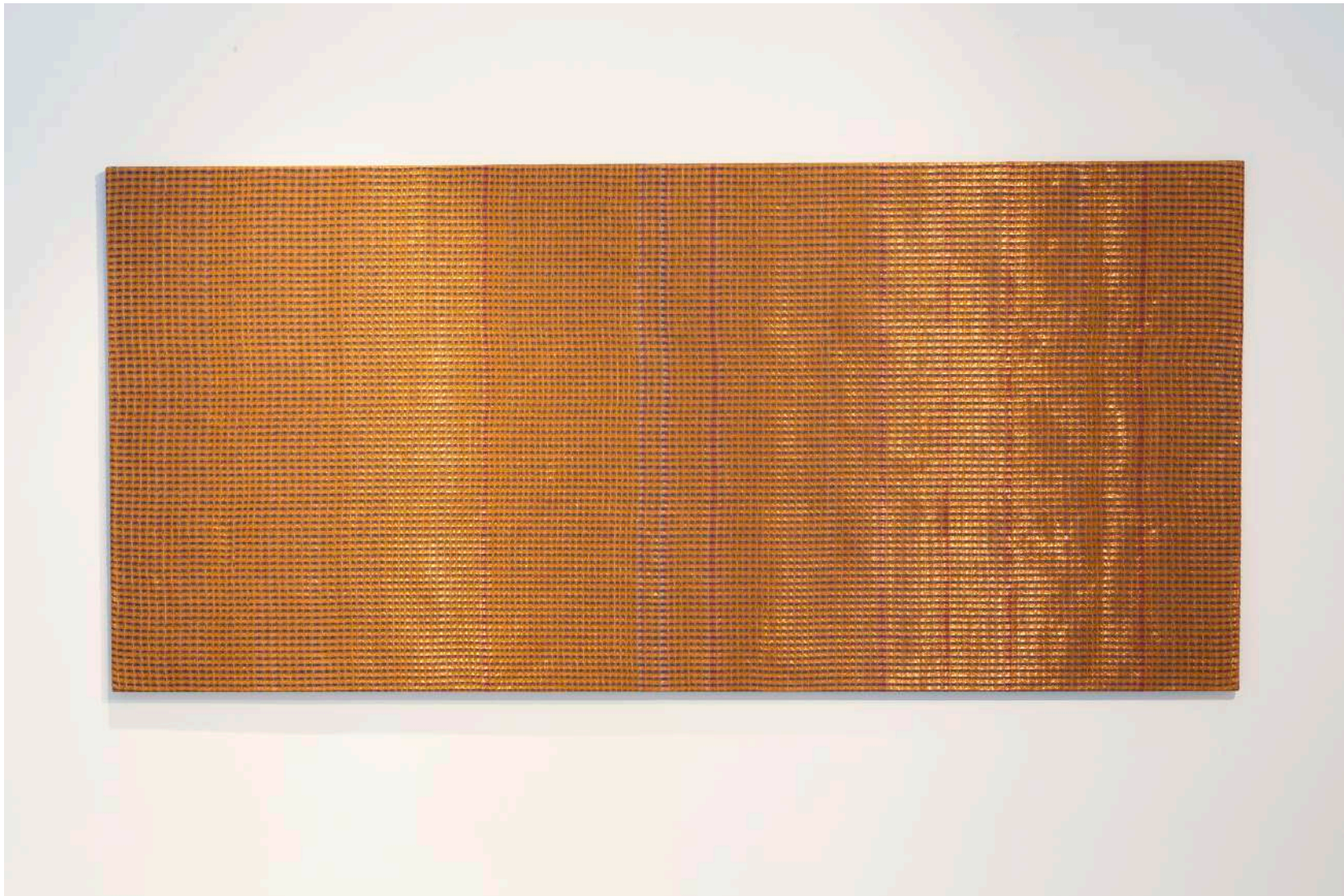






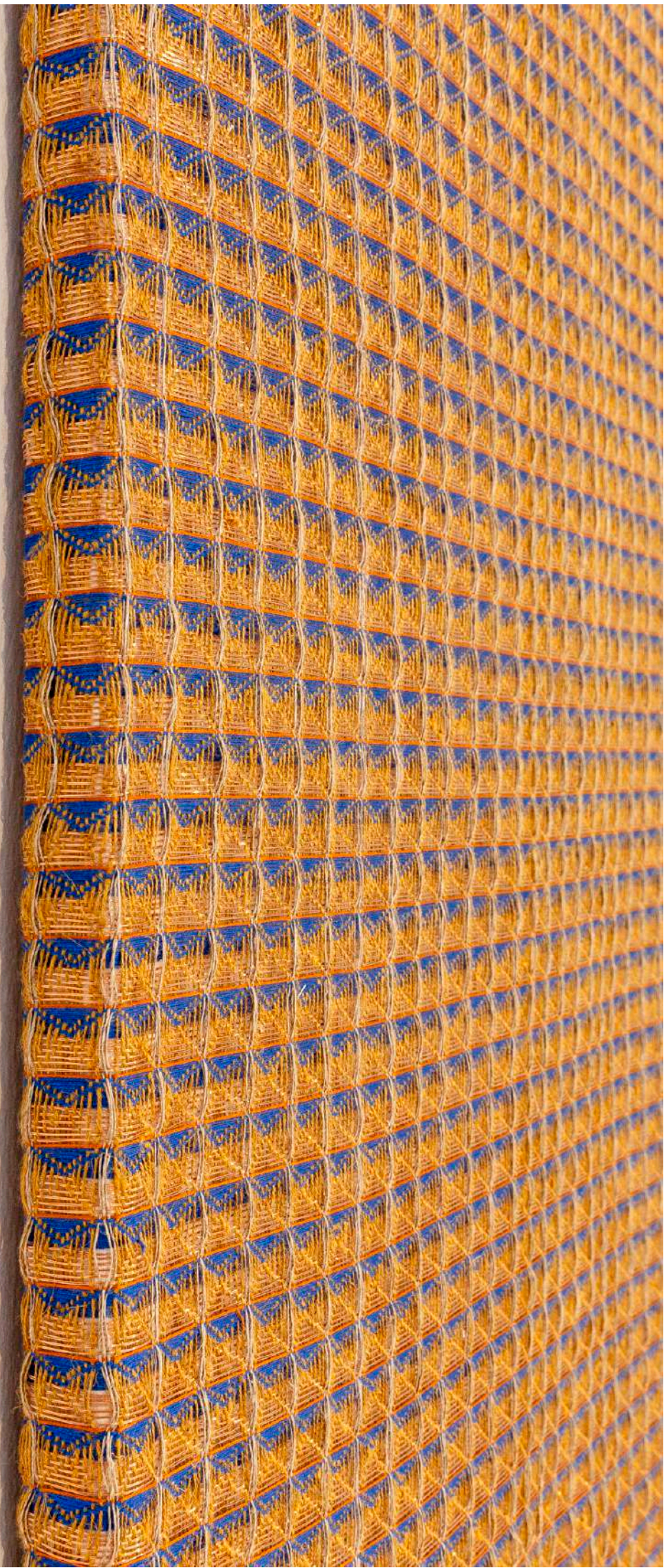
## Landscape I

In this large scale wallhanging, strands of cotton, silk and wool are fragmented and split apart by thick, black rubber tubing. The artwork was inspired by images of landscapes disfigured by mining processes. Like those landscapes, its raw beauty emerges from disruption, irregularity and the unexpected presence of discarded materials.



Studio Jumi: Monolith, 2023  
copper, cotton, linen, modal  
handwoven  
130 x 280 cm

10.000,00 € (incl. 7% VAT)





## Monolith

In this large-scale woven painting, copper, cotton, linen and modal fibre come together in a three dimensional weave structure.

The rasterized surface enhances the reflection of light and gives the work a golden appearance. The use of a valuable raw material such as copper in an over-dimensioned format alludes to the relationship between consumer behaviour and resource scarcity.



Studio Jumi: Grid II, 2023  
cotton, paper, linen, iron  
handwoven  
124 x 124 cm

3.000,00 € (incl. 7% VAT)

